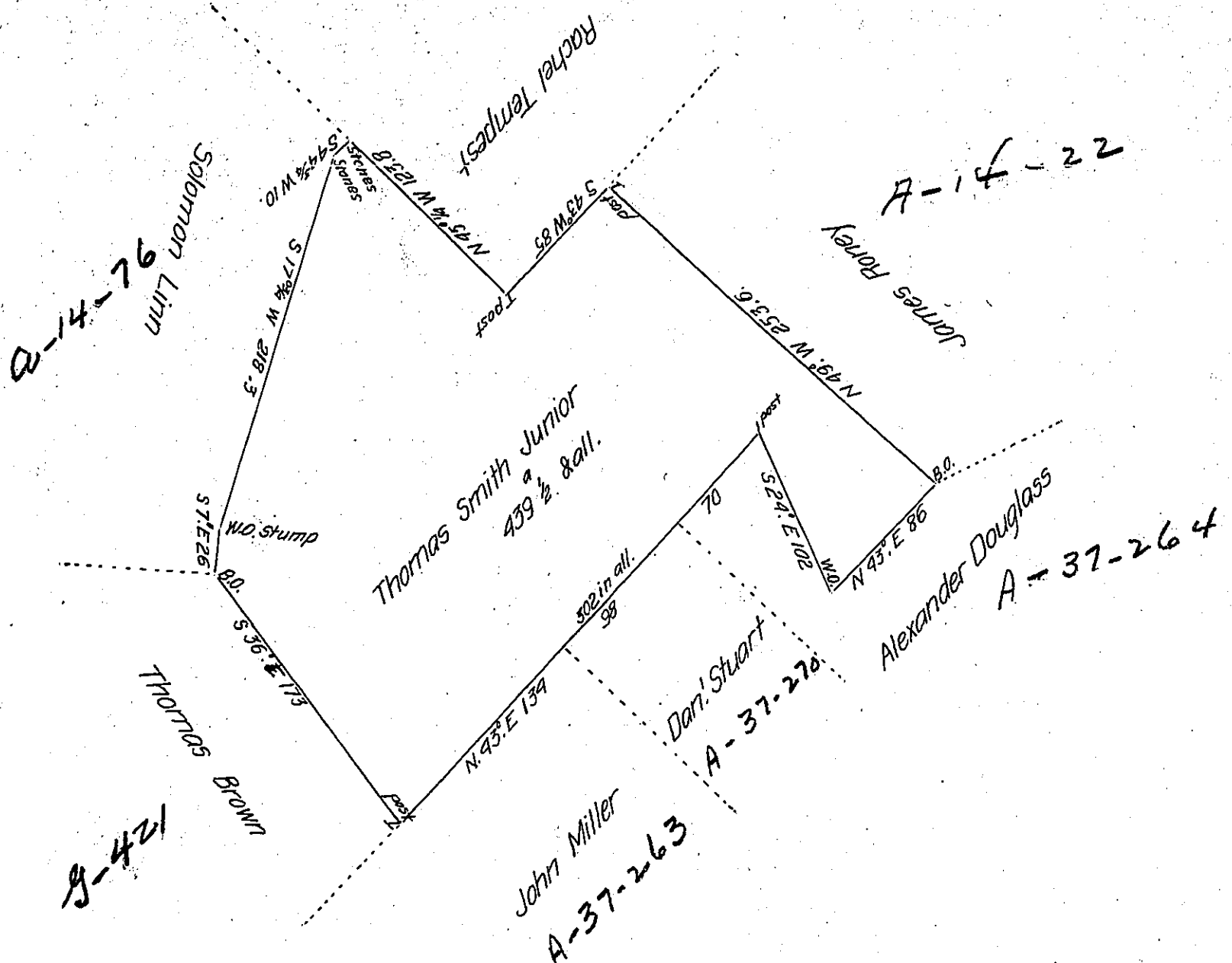


FORM NO. 1.



Situate on the East side of Savage Mountain adjoining Solomon Linn and others in Londonderry Township Bedford County & Surveyed the 18th Day of September 1794 In pursuance of a Warrant Dated the 19th Day of July 1793.

~~by John Wells (son of Richard)~~

To Daniel Brodhead Esq^r
Surveyor General

Approved by George Woods Jun^r
D.S.

IN TESTIMONY that the above is a copy of the original remaining on file in the Department of Internal Affairs of Pennsylvania, made conformably to an Act of Assembly approved the 16th day of February, 1833, I have hereunto set my Hand and caused the Seal of said Department to be affixed at Harrisburg, this.....Tenth..... day of December..... 1906.

Isaac R. Brown
Secretary of Internal Affairs.